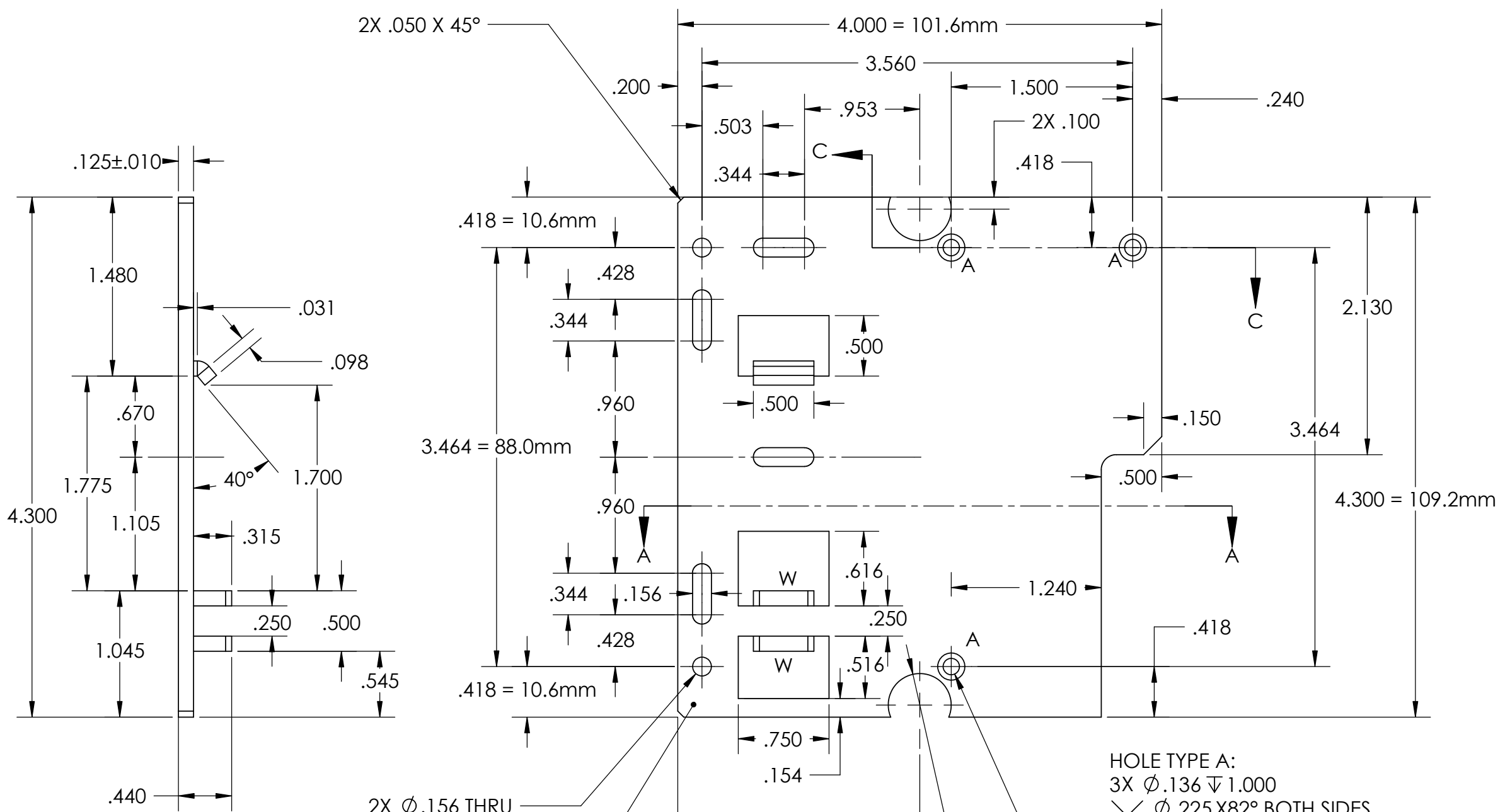
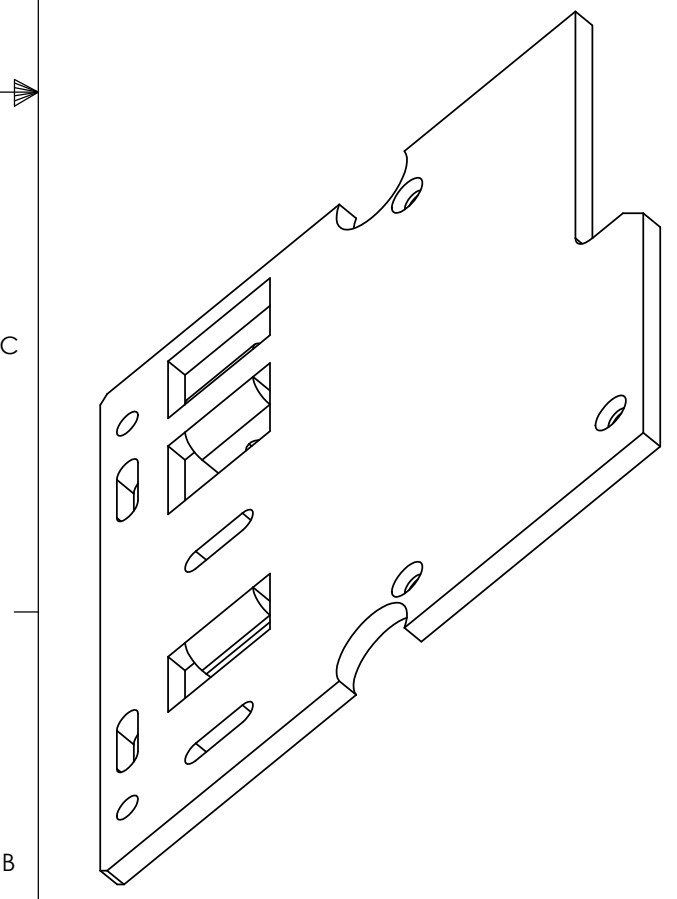
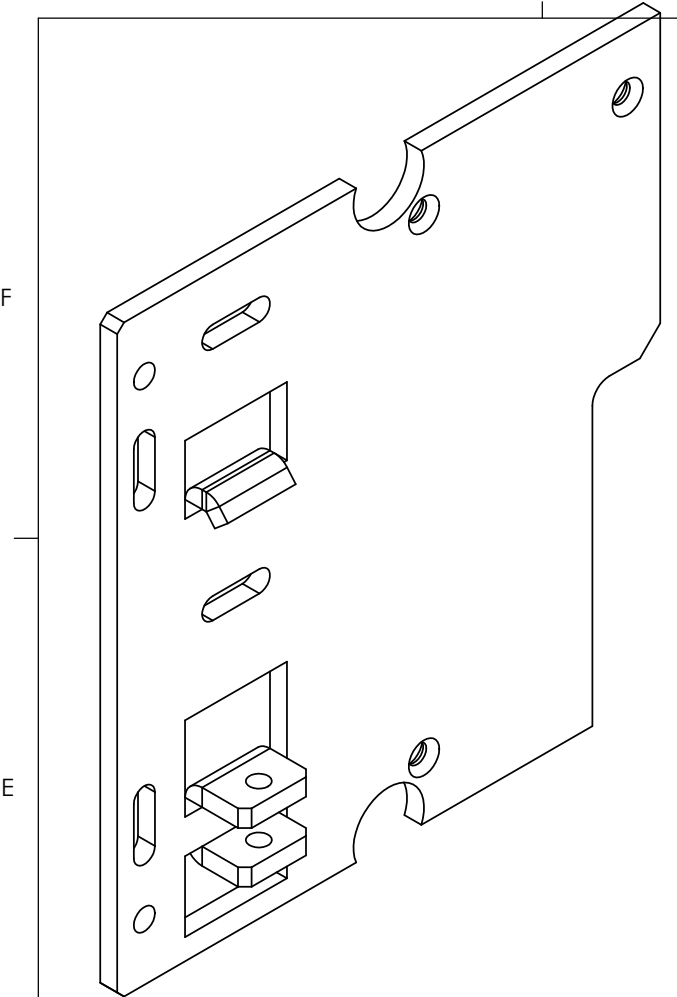
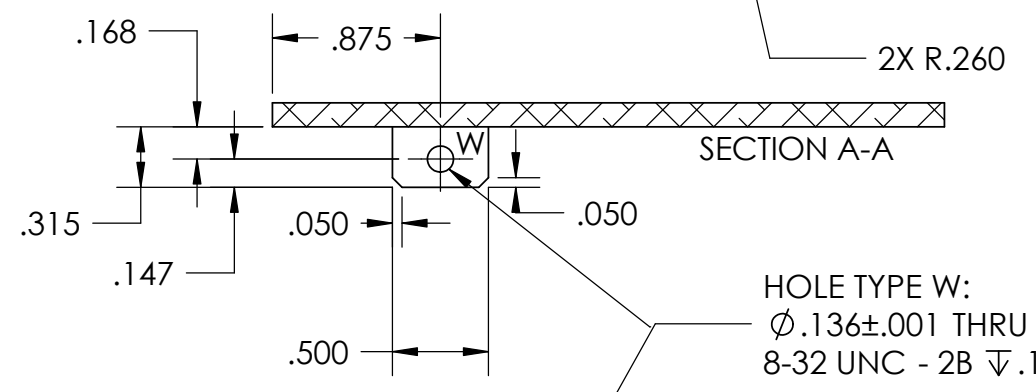


REVISIONS				
ZONE	REV.	DESCRIPTION	DATE	APPROVED
	2	ADD 8-32 TAP, MOVE R.25		
	3	REVISED FINISH NOTE		
	5	Made holes symmetrical, 1/20/08		



TEXTURE TOP AND BOTTOM SURFACE OF PLATE

HOLE TYPE A:
 3X Ø.136 ±.001
 √ Ø.225 X 82° BOTH SIDES.
 COUNTER SINK IS DONE FROM BOTH SIDES. THIS ALLOWS FLAT HEAD SCREW FROM EITHER DIRECTION. THIS OCCURS IN 3 PLACES. THIS INVOLVES DRILLING HOLE 0.136" DIAMETER THAT GOES THROUGH THE MATERIAL, AND THEN COUNTER SINK FROM BOTH SIDES SO THAT OUTER RIM DIAMETER IS 0.225" ON BOTH TOP AND BOTTOM SURFACE.



- NOTES:
- MAT'L: ALUM ALLOY 5052-H32, 0.125 +-.0010 INCHES THK (e.g. 3.0mm = 0.118)
 - FINISH PER ENCLOSED DOCUMENT "i4xx Standard Product Finish.doc".
 A) TEXTURE MUST BE APPLIED TO BOTH SIDES (TOP AND BOTTOM), AS NOTED ON DWG
 - REMOVE ALL BURRS AND SHARP EDGES .025 MIN R
 - THIS BRACKET TO INTERFACE WITH:
 A. QTY 3 SCREW, 82° FLAT HD, 4-40UNC X .25" LG, SS, McMASTER P/N 91771A106
 B. QTY 1, SCREW, PAN HD PHILLIPS, 8-32UNC X 1.50" LG, SS, McMASTER P/N 91772A203
 C. QTY 1, NUT, ACORN, 8-32, 0.312 W, 0.281 H, 1 solid machined piece, McMASTER P/N 92718A391
 - WRAP AND PACK SO THAT FINISH IS NOT SCRATCHED IN SHIPPING.

PROPRIETARY AND CONFIDENTIAL
 THE INFORMATION CONTAINED IN THIS DRAWING IS THE SOLE PROPERTY OF GW INSTRUMENTS. ANY REPRODUCTION IN PART OR AS A WHOLE WITHOUT THE WRITTEN PERMISSION OF GW INSTRUMENTS IS PROHIBITED. COPYRIGHT gwI 2004

UNLESS OTHERWISE SPECIFIED:		NAME	DATE
DIMENSIONS ARE IN INCHES	TOLERANCES:	DRAWN	JDM
FRACTIONAL ±	ANGULAR: MACH ± 1° BEND ±	CHECKED	
TWO PLACE DECIMAL ±.01	THREE PLACE DECIMAL ±.005	ENG APPR.	
INTERPRET GEOMETRIC TOLERANCING PER:	MATERIAL	MFG APPR.	
FINISH		Q.A.	
NEXT ASSY	USED ON	COMMENTS:	
APPLICATION	DO NOT SCALE DRAWING		

www.instruNet.com		
TITLE: MtgBrkt2		
SIZE: C	DWG. NO.	REV 5
SCALE: 1:1	WEIGHT:	SHEET 1 OF 1